
Sharing a Policy Patrol Configuration Across Multiple Servers

Policy Patrol allows you to share a configuration across multiple servers by separating the Policy Patrol Server that holds the configuration and processes the messages, from the Policy Patrol Agents that capture and deliver the messages. Policy Patrol Agents (SMTP sink or Transport Agent) can be installed on different machines than the Policy Patrol Server. Requests captured by the agents will be processed on the Policy Patrol Server and returned to the Agent for delivery.

The Policy Patrol Server can be installed on a machine with Exchange Server installed or without. If it's installed on an Exchange Server machine there is no need to install the Policy Patrol Agent on that machine. You will then only need to install the Policy Patrol Agents on the Exchange Servers where Policy Patrol is not installed. If you install the Policy Patrol Server on a machine without Exchange installed, you need to install the Agents on all Exchange Servers on which you would like to process messages. For Exchange 2007/2010/2013, Policy Patrol Agents need to be installed on the Exchange Servers with the Hub or Edge Transport role.

This document describes how to deploy Policy Patrol Servers and Policy Patrol Agents in order to share a configuration.

Important: If you have Exchange 2007/2010/2013/2016 you must install the Policy Patrol Server on a 64-bit machine. If you have Exchange 2003 you must install the Policy Patrol Server on a 32-bit machine.

Note that you require an additional server license for installing multiple Policy Patrol Agents (the first one is included in the original license). So for instance if you install one Policy Patrol Server and 3 Policy Patrol Agents, you require 2 additional server licenses. Please contact our sales department (sales@redearthsoftware.com) for a quote.

1. Deploy Policy Patrol Server

First you must install the Policy Patrol Server. This is the same as a regular installation (select 'Complete' as the installation type). For a description of the steps, please refer to the Policy Patrol manual.

2. Deploy Policy Patrol Agents

Next, the Policy Patrol Agents must be installed on a machine with either Exchange Server or an SMTP Server by running the installer with certain command line parameters as described below:

1. Open a command prompt. Go to the location where the Policy Patrol installer is copied locally.
2. Enter the appropriate command listed below:

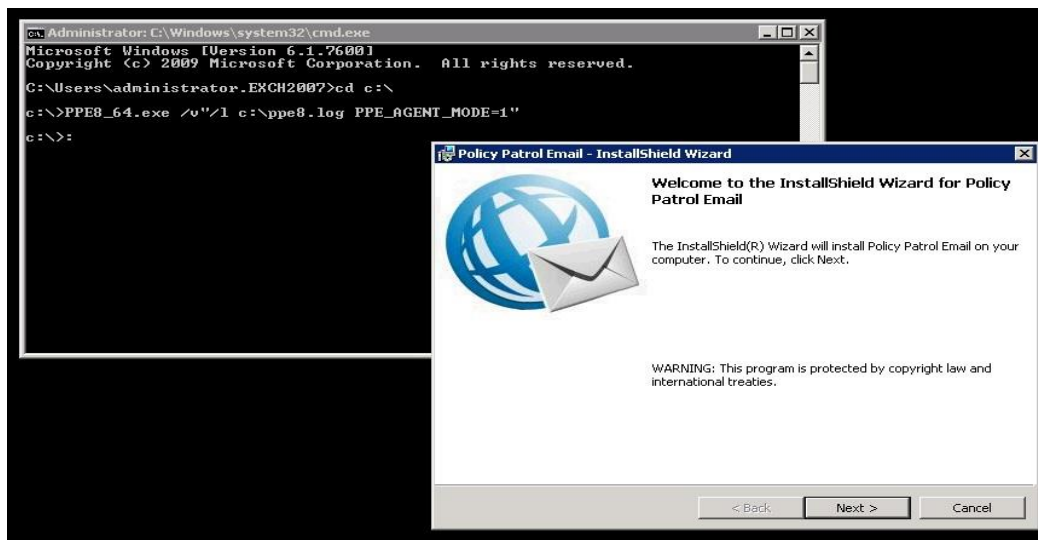
If you want to install the Policy Patrol Agent on Exchange 2007/2010/2013, enter the command below:

```
polycypatrol64.exe /v"/1 c:\ppe9.log PPE_AGENT_MODE=1"
```

If you want to install the Policy Patrol Agent on Exchange 2003, enter the command below:

```
polycypatrol.exe /v"/1 c:\ppe9.log PPE_AGENT_MODE=1"
```

3. Press [Enter]. The InstallShield wizard will start up.
4. In the Welcome screen, click **Next**.



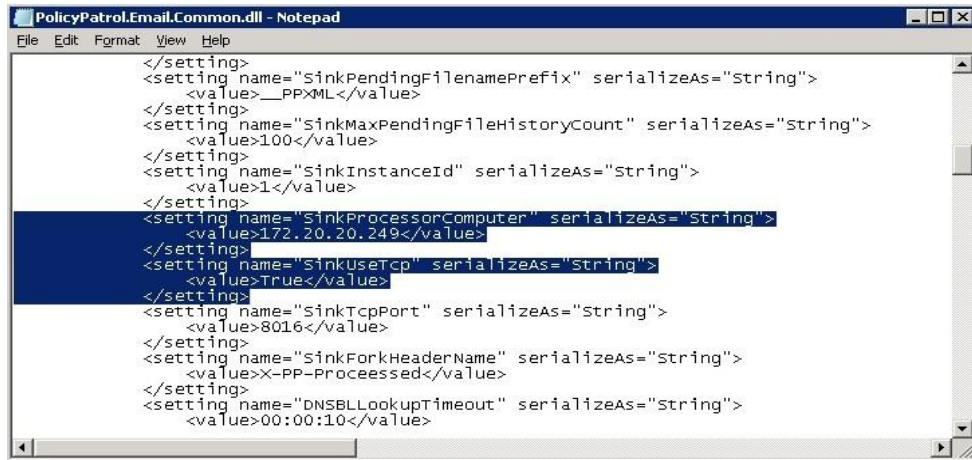
5. Read the License Agreement and select **I accept the terms in the license agreement** and click **Next**.
6. Enter your user name and company name. Click **Next**.
7. Select the destination folder for the Policy Patrol installation. By default the program will be installed in C:\Program Files\OPSWAT\Policy Patrol Email (32-bit version) or C:\Program Files (x86)\OPSWAT\Policy Patrol Email (64-bit version). If you wish to change the location, click **Change** and select another folder. When you are ready, click **Next**.
8. Click **Install** to start installing.
9. When the installation wizard has finished copying the files, click **Finish**.
10. After installation, open PolicyPatrol.Email.Common.dll.config in Notepad or any other text editor and change the following values:

Name: SinkProcessorComputer

Value: IP address/name of computer with Policy Patrol installed (must be a complete installation).

Name: SinkUseTcp

Value: True



```
PolicyPatrol.Email.Common.dll - Notepad
File Edit Format View Help
</setting>
<setting name="sinkPendingFilenamePrefix" serializeAs="string">
  <value>__PP>ML</value>
</setting>
<setting name="sinkMaxPendingFileHistoryCount" serializeAs="string">
  <value>100</value>
</setting>
<setting name="sinkInstanceId" serializeAs="string">
  <value>1</value>
</setting>
<setting name="sinkProcessorComputer" serializeAs="string">
  <value>172.20.20.249</value>
</setting>
<setting name="sinkUseTcp" serializeAs="string">
  <value>True</value>
</setting>
<setting name="sinkTcpPort" serializeAs="string">
  <value>8016</value>
</setting>
<setting name="sinkForkHeaderName" serializeAs="string">
  <value>X-PP-Processed</value>
</setting>
<setting name="DNSBLLookupTimeout" serializeAs="string">
  <value>00:00:10</value>
```

11. Restart IIS Service (32-bit) or Microsoft Exchange Transport service (64-bit) for the settings to apply.

You must install the Agents as described above on all the Exchange Servers from which you wish Policy Patrol to capture emails. Each Agent will capture messages and send them to the Policy Patrol Server, which will return the messages to the Agents for delivery.

To configure Policy Patrol you must access the Policy Patrol Administration console on the Policy Patrol Server. The configuration will apply for all installed Agents that have been configured to use that server.

Note: On the Policy Patrol Server computer it might be required to open ports 8015, 8016, 8017 and 8072 if a firewall is in use.